



CALIFORNIA STRATEGIC
GROWTH COUNCIL

Affordable Housing and Sustainable Communities (AHSC) Program

Presented by:

- Brianne Logasa (Associate)
- Marc Caswell (Advisor)

February 20, 2025



Affordable Housing and Sustainable Communities

AHSC is part of the California Climate Investments (CCI), a statewide initiative that puts billions of Cap-and-Trade dollars to work.

- Reduce Greenhouse Gas Emissions
- Support Disadvantage Communities
- Improve Public Health and Safety
- Improve connectivity and accessibility

Require Collaborative Projects Components:

- Green Affordable Housing (50% of application)
- Near Public Transit
- Active Transportation Infrastructure
- Zero-Emission Vehicles & Transit Amenities
- Urban Greening (Trees, gardens, water infiltration)



CALIFORNIA
STRATEGIC
GROWTH
COUNCIL

The Affordable Housing and Sustainable Communities (AHSC) Program funds infill projects that reduce **Greenhouse Gas (GHG)** emissions and **Vehicle Miles Traveled (VMT)** through sustainable land use, housing, and transportation practices.



AHSC Funding

Funding Source: 20% of Greenhouse Gas Reduction Fund (GGRF) auction proceeds through 2030

Funding Availability:

- Round 7 ~\$750M
- Round 8 ~\$750M
- Upcoming Round 9 ~\$775M

Minimum & Maximum Award:

- Minimum \$10M*, Maximum \$50M
 - \$35M cap for housing
 - \$15M cap for transportation

*Proposed \$1M minimum for tribes

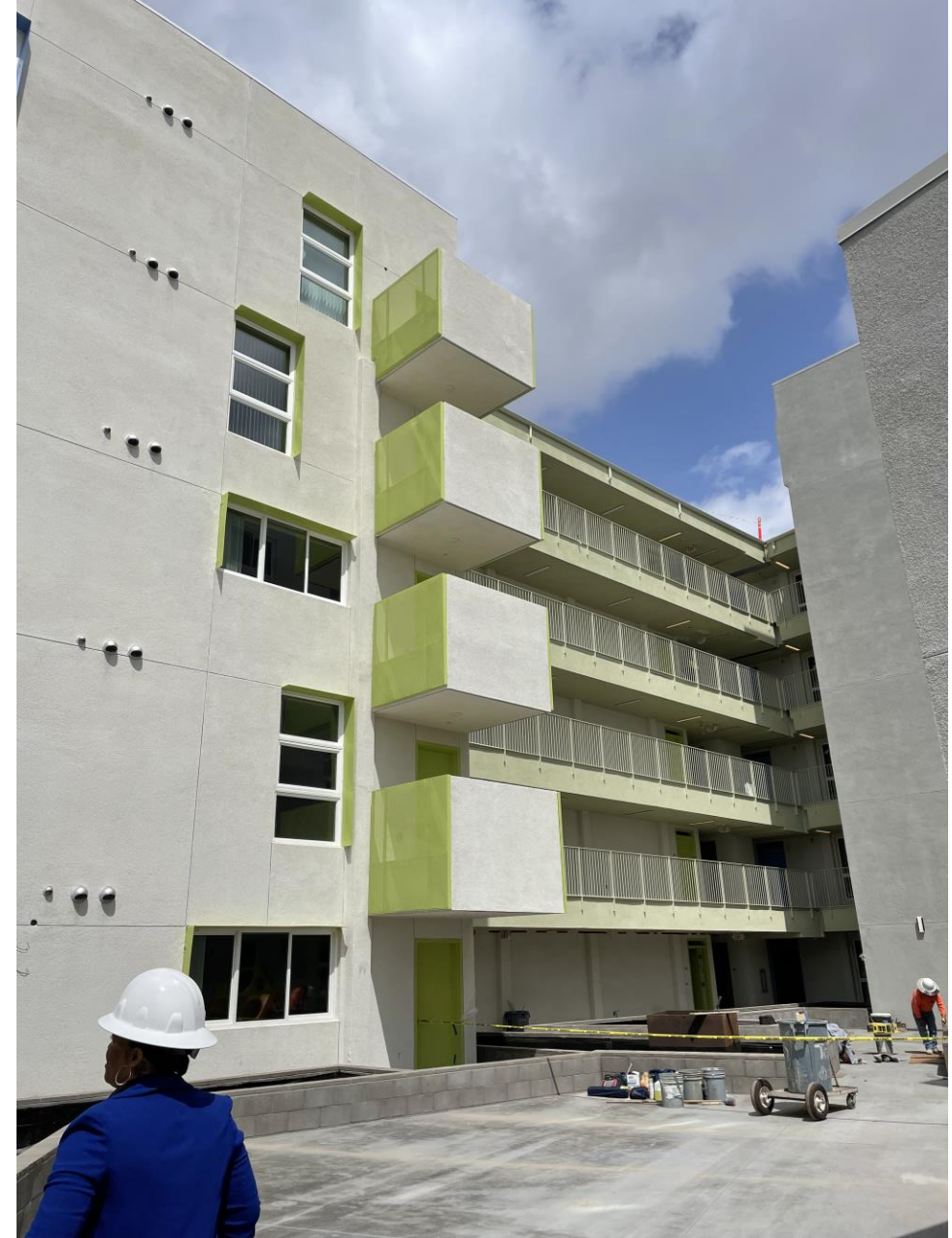


CALIFORNIA
STRATEGIC
GROWTH
COUNCIL

Active Transportation Details

Partner with a developer to implement:

- New or improved walkways/bikeways that improve mobility and access of pedestrian/cyclists
- Repaving and road reconstruction (where the new or improved walkways and bikeway is installed)
- Streetscape improvements (e.g., lighting, signage, wayfinding markers, etc.)
- Street crossing enhancements such as new or improved pedestrian crossings or over-crossings, accessible ramps, and pedestrian signals
- Bike sharing infrastructure and fleet
- Street furniture (e.g., benches, shade structures, etc.)
- Publicly accessible bicycle parking or repair kiosks
- Bicycle carrying devices on public transit



What makes a successful AHSC project?

- Collaboration & partnerships
- Infill in Disadvantaged Communities (DAC)
- Implementation of Sustainable Community Strategy
- Transit ridership & mode shift
- Realistic budgets & scopes
- Bold vision & transformative projects

Consider this as a chance to fund and build projects in your existing Bike/Ped Plans!



CALIFORNIA
STRATEGIC
GROWTH
COUNCIL

Public Works & Engineering: Challenges & Solutions

- Collaboration & Timing
 - Start early
 - Talk with your housing departments
 - Create (or join) a pipeline of housing projects
- Scoping & Budgeting
 - Implement the items already identified in your plans
 - 'Dots & Lines' – can fund PS&E and PA&ED
 - Flexibility in cost estimation (by item)
- Joint and Several Liability
 - Only commit to what you know can be accomplished
 - Build in flexibility
 - Work with trusted partners



Next Steps

SGC Website

- Past & Current Program Guidelines
- Quantification Methodology
- Past Project Fact Sheets & Awards
- Workshop Recordings
- Request for Technical Assistance

Starting Point: sgc.ca.gov/programs/ahsc/

Questions: ahsc@sgc.ca.gov



CALIFORNIA
STRATEGIC
GROWTH
COUNCIL



CALIFORNIA STRATEGIC
GROWTH COUNCIL

Affordable Housing and Sustainable Communities (AHSC) Program

Presented on February 20, 2025
by Brianne Logasa & Marc Caswell

More info:

AHSC@sgc.ca.gov

